

CORRECTION

Phylogenetic and taxonomic implications of protein variation in the Mesoamerican salamander genus *Oedipina* (Caudata: Plethodontidae)

David A. Good and David B. Wake
Rev. Biol. Trop., 45(3):1185-1208, 1997

Proof was not read by the authors. We regret the errors as published. Correct versions of figures are reproduced below. In the text, replace "taxones" with "taxa".

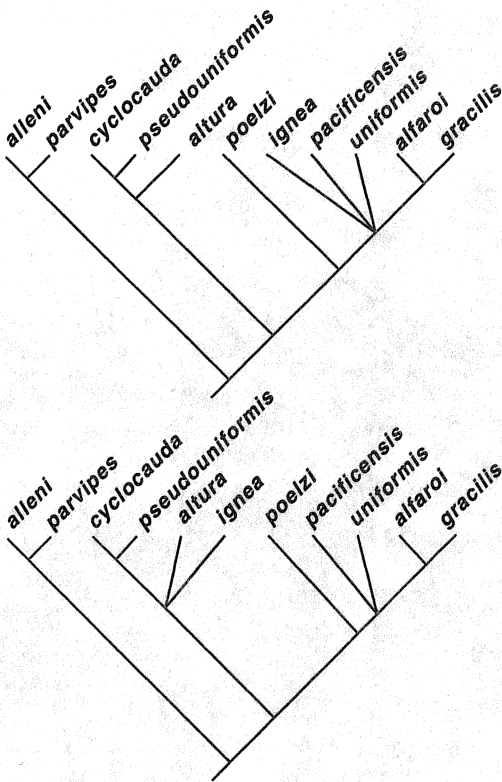


Fig. 5. The two most parsimonious phylogenetic hypotheses of the 11 species of *Oedipina* for which all loci were scored. Consistency index (CI) = 0.974, rescaled consistency index (RC) = 0.925, retention index (RI) = 0.950.

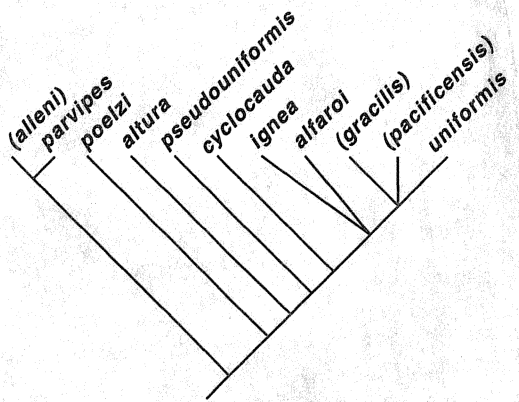


Fig. 7. The phylogenetic hypothesis of Brame (1968, Fig. 29) for the species of *Oedipina* included in the present analysis. Taxa in parentheses were not accepted by Brame, but their proposed phylogenetic positions are inferred from Brame's synonymies. *Oedipina grandis* is not included in this figure because it was unknown to Brame.